

TSXV: OMM



Tom MacNeill President & CEO

Placer Recovery • Lode Gold Exploration
The New Cariboo Gold Rush



Forward Looking Statements

This presentation is for information purposes only and does not constitute an offer to sell or a solicitation to buy any securities

This presentation includes certain “forward-looking statements” within the meaning of applicable securities legislation. These statements are based on management’s current expectations and are naturally subject to certain uncertainty and changes in circumstances. Actual results may vary materially from the expectations contained herein due to changes in economic, business, competitive and/or regulatory factors. Omineca is under no obligation to (and expressly disclaims any such obligation to) update or alter its forward-looking statements whether as a result of new information, future events or otherwise. The reader is cautioned not to place undue reliance on forward-looking statements.

A qualified person has not done sufficient work to classify the historical estimates contained herein as current mineral resources or mineral reserves, the Company is not treating the historical estimate as current mineral resources or mineral reserves and the historical estimate should not be relied upon.



Who We Are

President & CEO, Director
CFO, Director
Corporate and Business Development
Technical Advisor, Qualified Person
Director
Advisory Board
Advisory Board

Tom MacNeill, CFA, CGA
Andrew Davidson, CA, CPA
Dean Nawata
Dr. Stewart A. Jackson, P.Geo
Sylvain Laberge
John Kiernan, P.Eng
Len Sinclair

Tom MacNeill is founder, president and CEO of **49 North Resources** a resource investment and development company headquartered in Saskatchewan. Along with **Andrew Davidson** and **Dean Nawata**, 49 North has been directly involved at in several successful junior resource projects from inception through exit or buy out such as Athabasca Potash, Prairie Hunter Oil & Gas and Copper Canyon.

It was 49 North that originally funded and brought Saskatchewan based ground freezing technology to Wingdam, then a private company, and under **Len Sinclair's** stewardship, in 2012 successfully recovered 5.4 kilos of placer gold locked under 40 meters of wet overburden beneath Lighting Creek.

Omineca's partner and mining contractor, **HCC Mining** and Demolition Inc of Saskatoon, SK has specialized equipment, decades of diversified, innovative mining techniques and experience including over 10 years of alluvial gold mining operations.

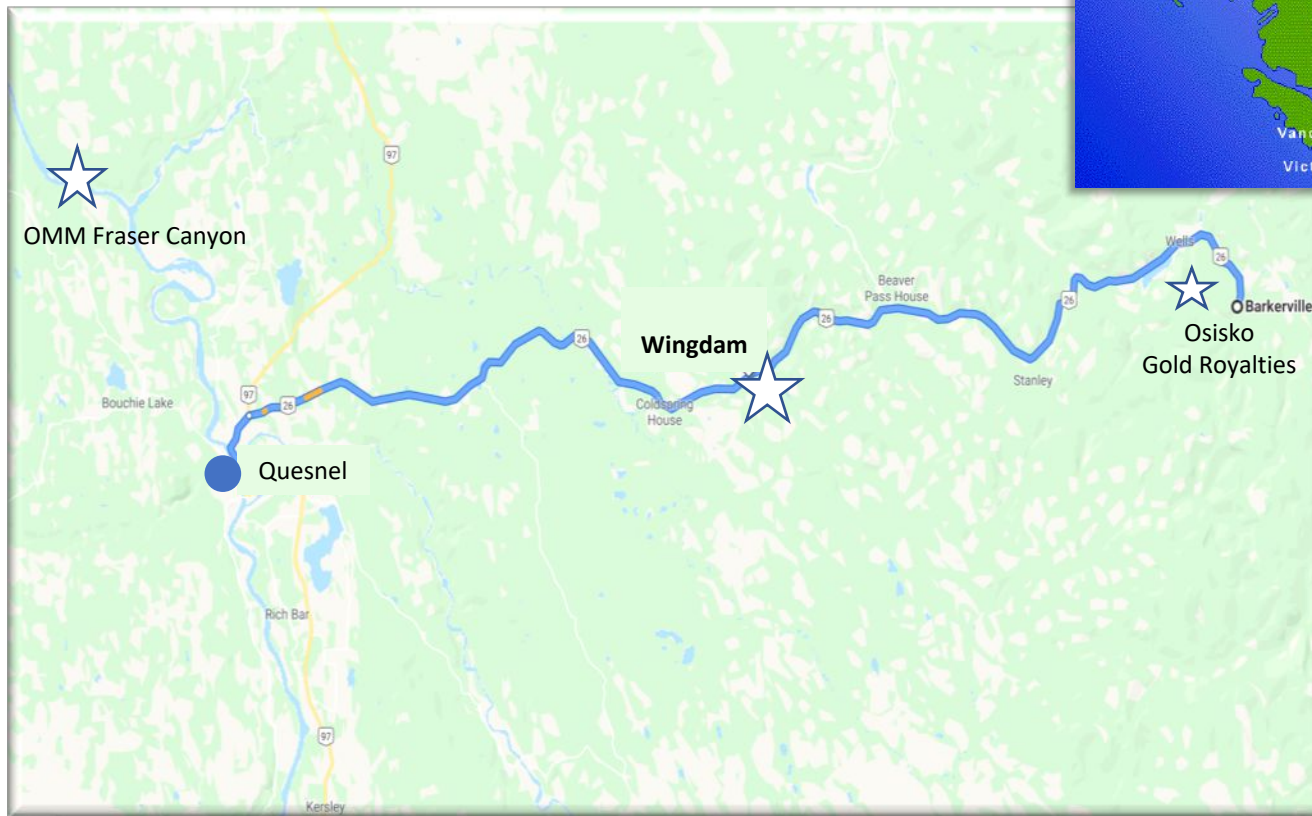


Share Structure

Listing	TSXV: OMM
Shares I/O	84,894,386
Warrants	11,000,000
Options	7,925,000
Fully Diluted	103,819,386
Management and Insiders	~75%

South Central BC, Cariboo Mining District

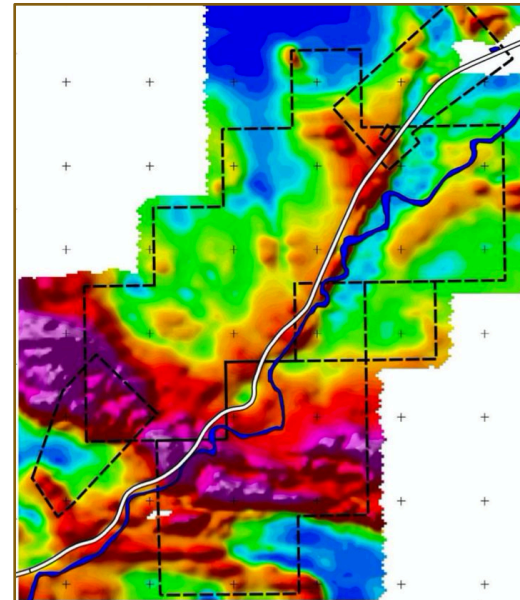
Wingdam Project - Midway between Osisko Gold Royalties' "Cariboo Gold Project" at Barkerville and town of Quesnel along Lightning Creek on Highway 26



Placer Recovery and Hard Rock Gold Exploration

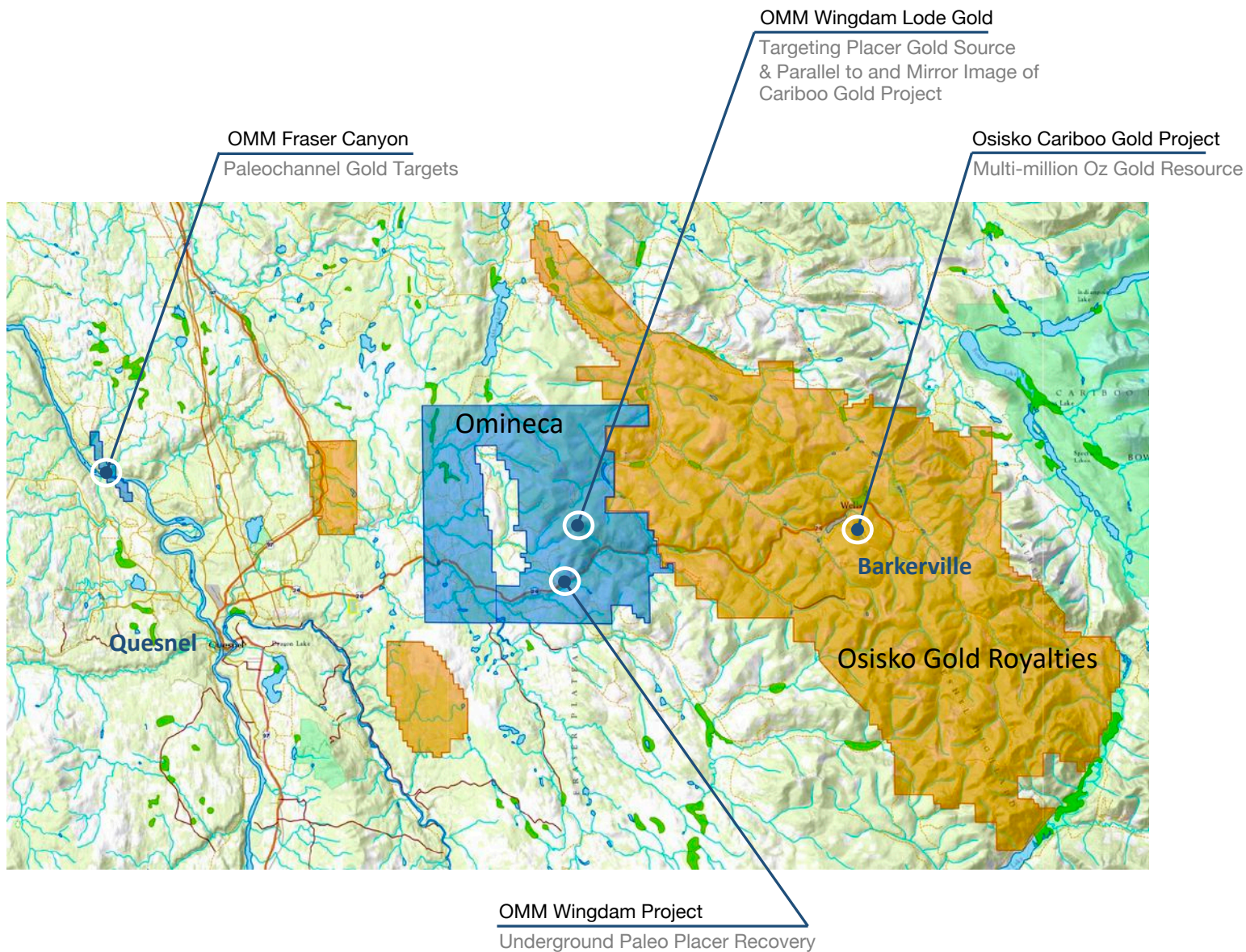
Both of OMM's **Wingdam** and **Fraser Canyon** Projects have two distinct yet related programs:

- An underground **alluvial gold** recovery program underway at Wingdam and exploration for additional potentially gold-bearing paleochannels at Fraser Canyon.
- An exploration program for potential hard-rock **lode gold** mineralization and/or potential sources for the placer gold found in the area.





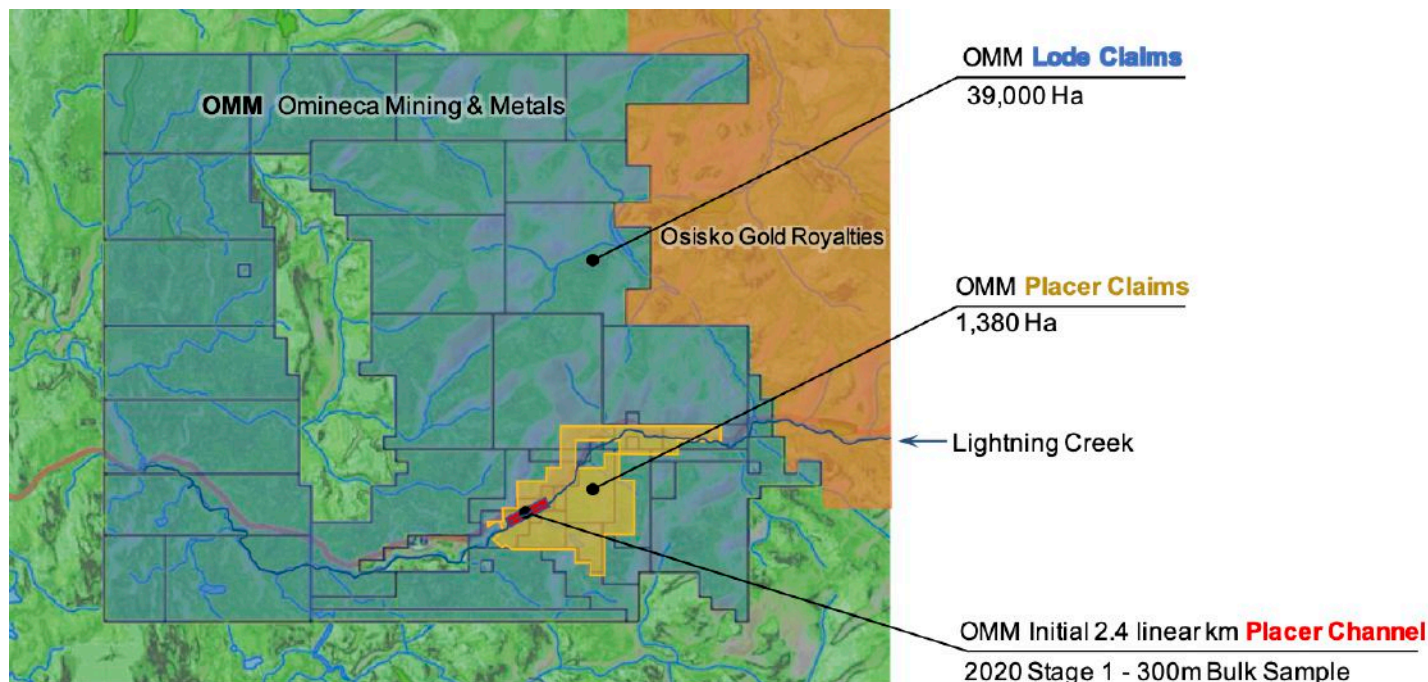
South Central BC, Cariboo Mining District





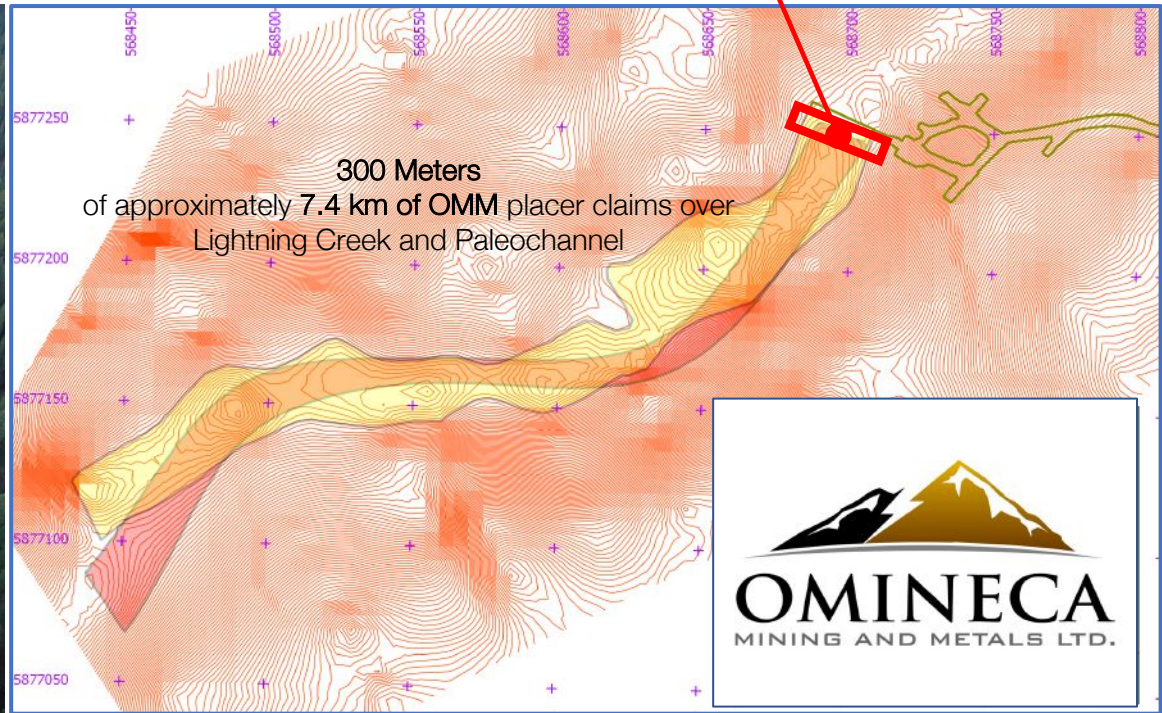
Placer Claims Extended Over Lightning Creek

- Extended paleochannel length beneath Lightning Creek to ~15 Linear kms. Original Wingdam placer channel focused on 2.5 km. Stage 1 in 2020 will begin with first 300m
- Extended coverage on the south side of the river valley. Historically creeks and tributaries into Lightning Creek were most prolific from the south

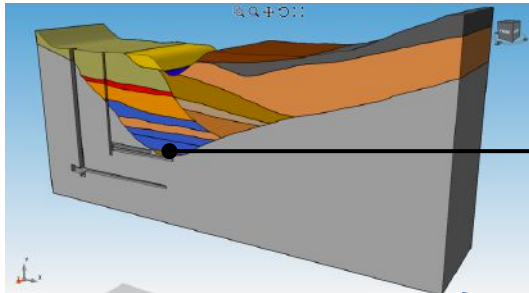


Placer Gold Recovered From Buried Paleochannel

Test sample recovered 5.4 kilos (173.5 ounces) from
2.4m wide 23.4m long crosscut drift (2012)



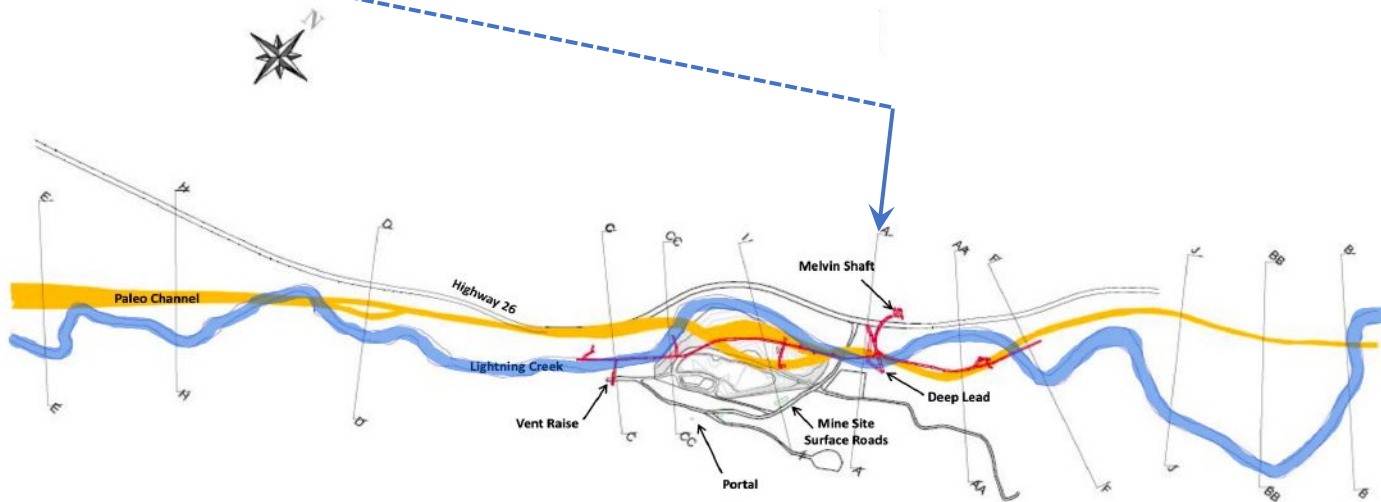
Sections From Historic Drill Holes and Seismic



2012 Crosscut & Processing



"The Deep Lead Channel contains some of the highest placer gold concentrations historically reported in all of the Cariboo Mining District and perhaps throughout British Columbia that remains unmined"

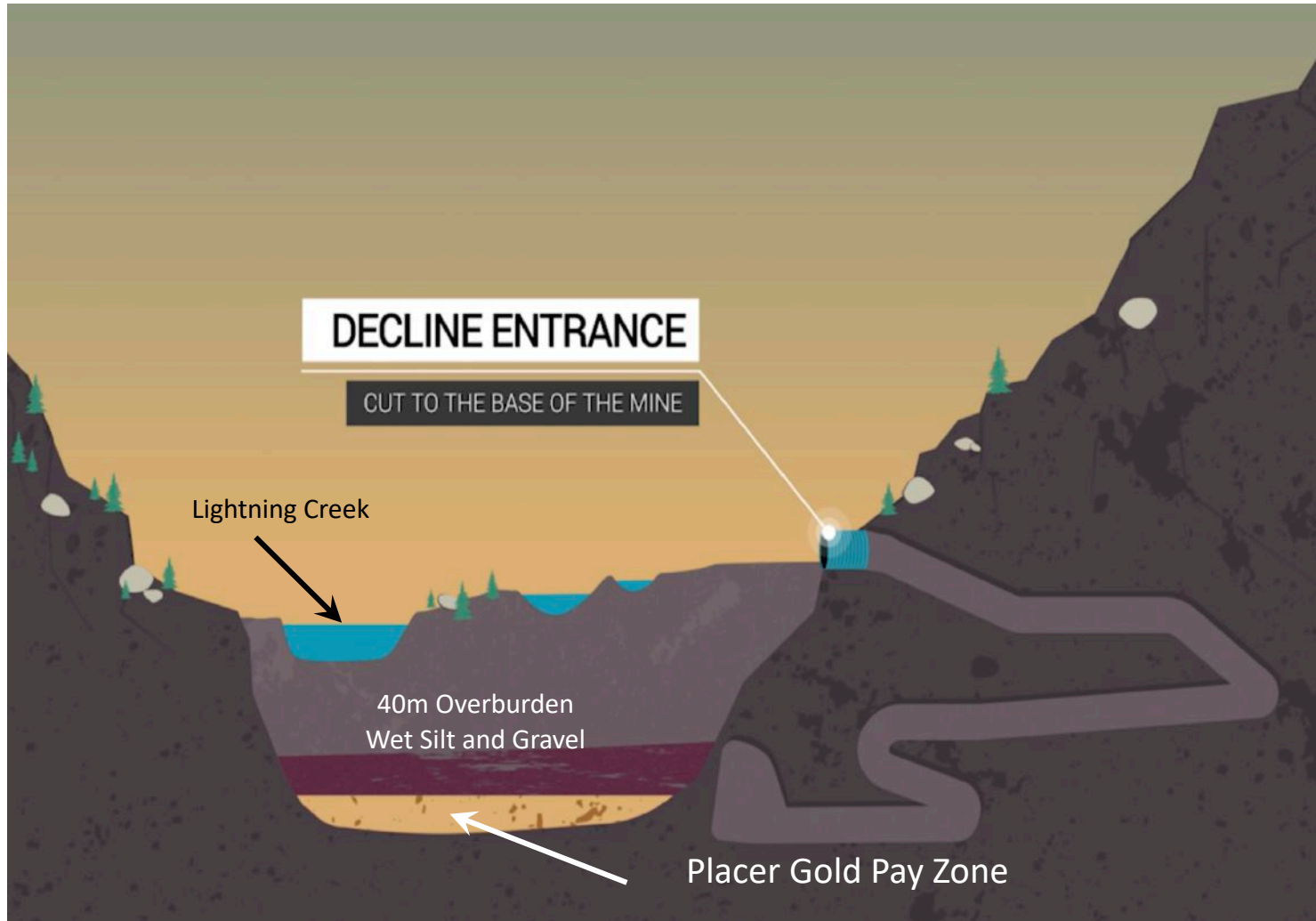


← OMM Placer
Claims +2 km

First Phase 2.4 km

OMM Placer
Claims +3 km →

2.5 km of Buried Gold-bearing Paleochannel





How We Recover the Gold Underground



2.4 Km Channel Underneath
Lightning Creek



Dewater Existing Decline



If Necessary, Freezing Any
Unstable Ground Above Crosscut



Crosscut Material Processed by Water
Wash Plant Underground



5.4 Kilos Placer Gold Recovered
in 2012



2012 Bulk Sample

From a single 2.44-meter-wide crosscut of 2.4 kilometers of the paleochannel:

- 173.5 ounces (5.4 kilograms) of raw placer gold was extracted
- 0.438 oz/t (13.63 g/t) gold across entire 23.5m drift
- 0.652 oz/t (20.28 g/t) gold across central portion (14.8m)
- Recovery was more than 99% efficient

*bulk sample 2012





2019/20 Work Flow Wingdam Underground

Past

- ✓ Proof of concept 2012 bulk sample yielded 5.4 kilos (174 oz) of placer gold from a single, 2.4m wide underground crosscut across the 2.4 kilometer paleochannel

2019

- ✓ JV agreement executed 2019 funding all prep work to begin bulk sample extraction.
- ✓ Fixed-cost (CAD \$850/oz produced) mining contract signed for larger-scale bulk sample
- ✓ Grout plug placed and tested to accelerate dewatering of mine workings and mining zones – reducing the need for ground freezing
- ✓ Dewatering underway

2020 - 23

- Ground freezing operations for any unstable ground left after dewatering
- Phase 1 mining operations for bulk sample over first 300m of paleochannel
- Gold extracted with water wash plant and trommel from gravels as they are taken from each crosscut
- Barren gravels returned to crosscuts as backfill
- Next phases – repeat over full 2.4 km of paleochannel



Mining Contractors as Partners



PROVEN EXPERIENCE & INNOVATION

- JV Partners
- Fixed Cost Mining Contract

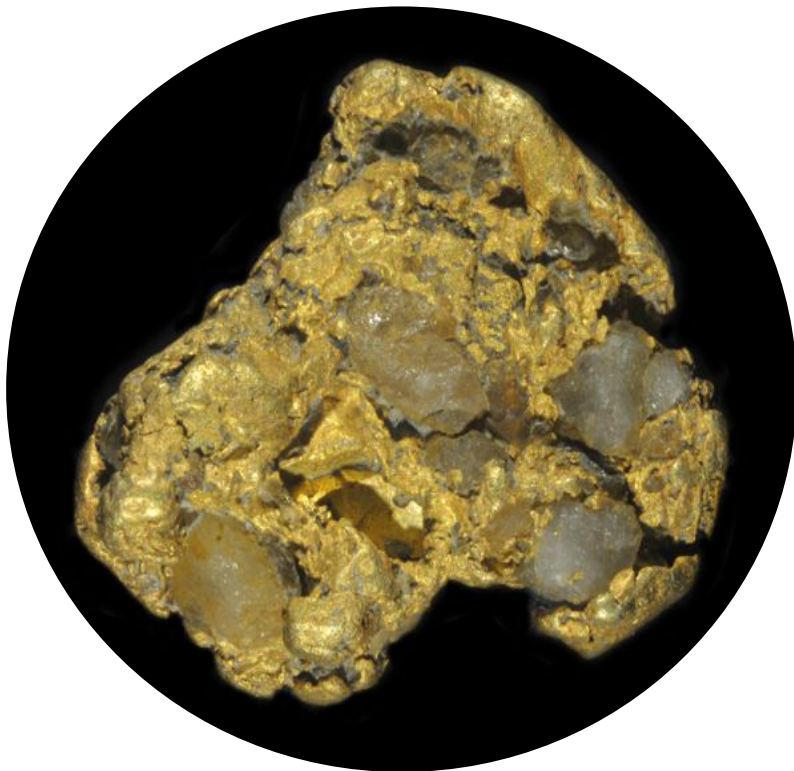
Fixed Cost Mining Contract and Gold Price in Canada





Quartz in Gold Nuggets VS Gold in Quartz Vein

Quartz in Gold Nugget VS Gold in Quartz Vein
Indicative of a source of the placer

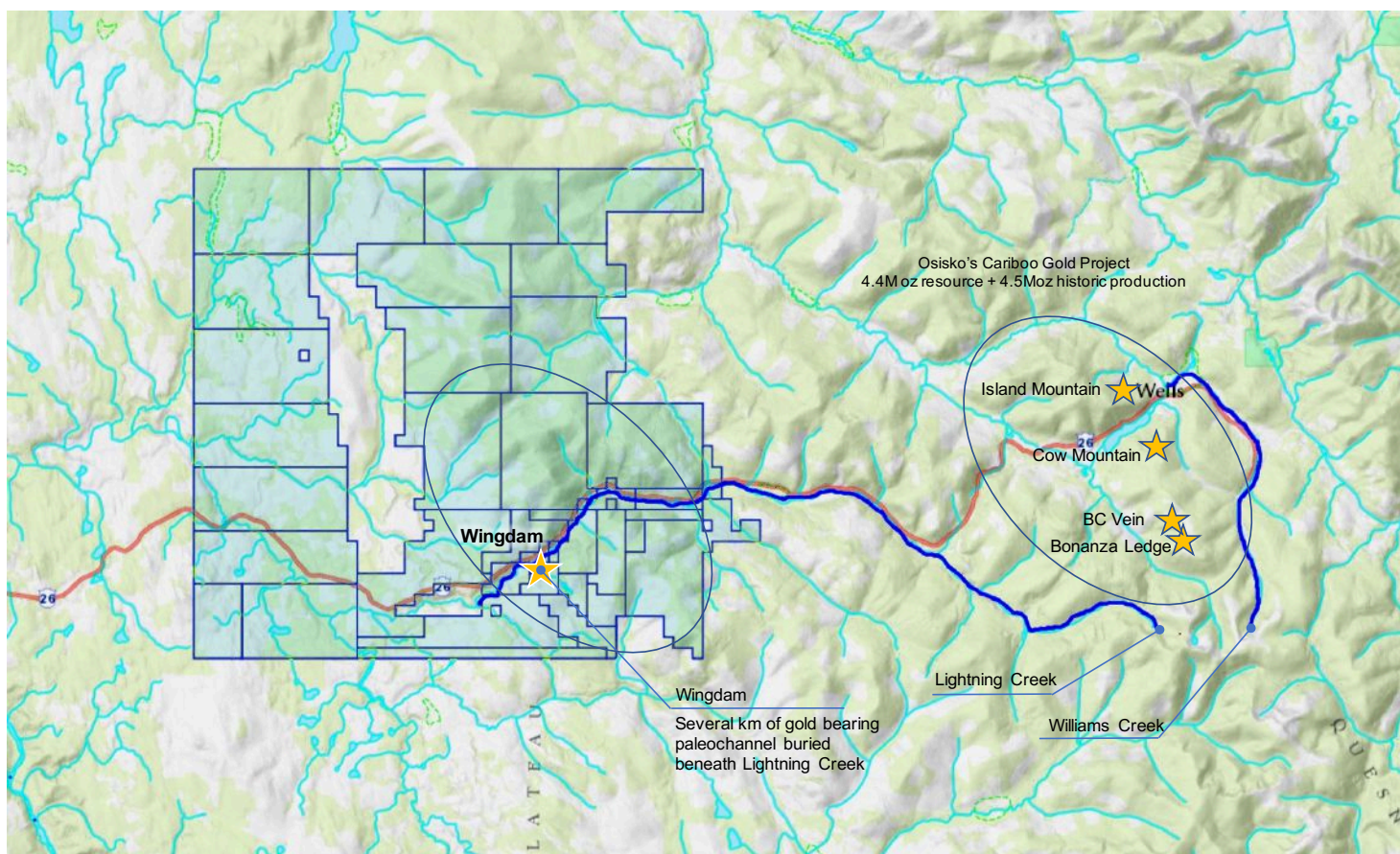




Lode Gold Source of the Cariboo Gold Rush

The 2 Richest Placer Streams of the Cariboo Gold Rush

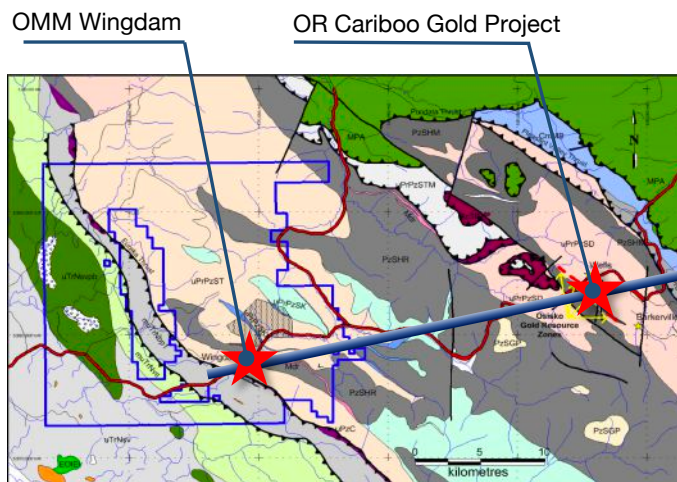
- Was Cariboo Gold the source of the placer taken from Williams Creek?
- Where is the source of the placer at Wingdam and Lightning Creek?



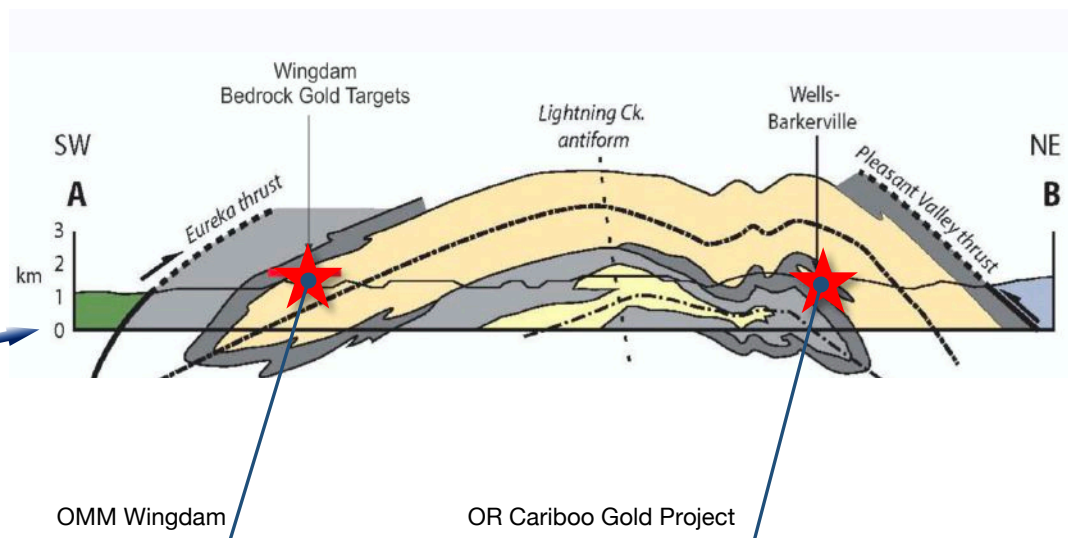


Mirror Image to Barkerville & Williams Creek

2 Parallel NW-SE Structures

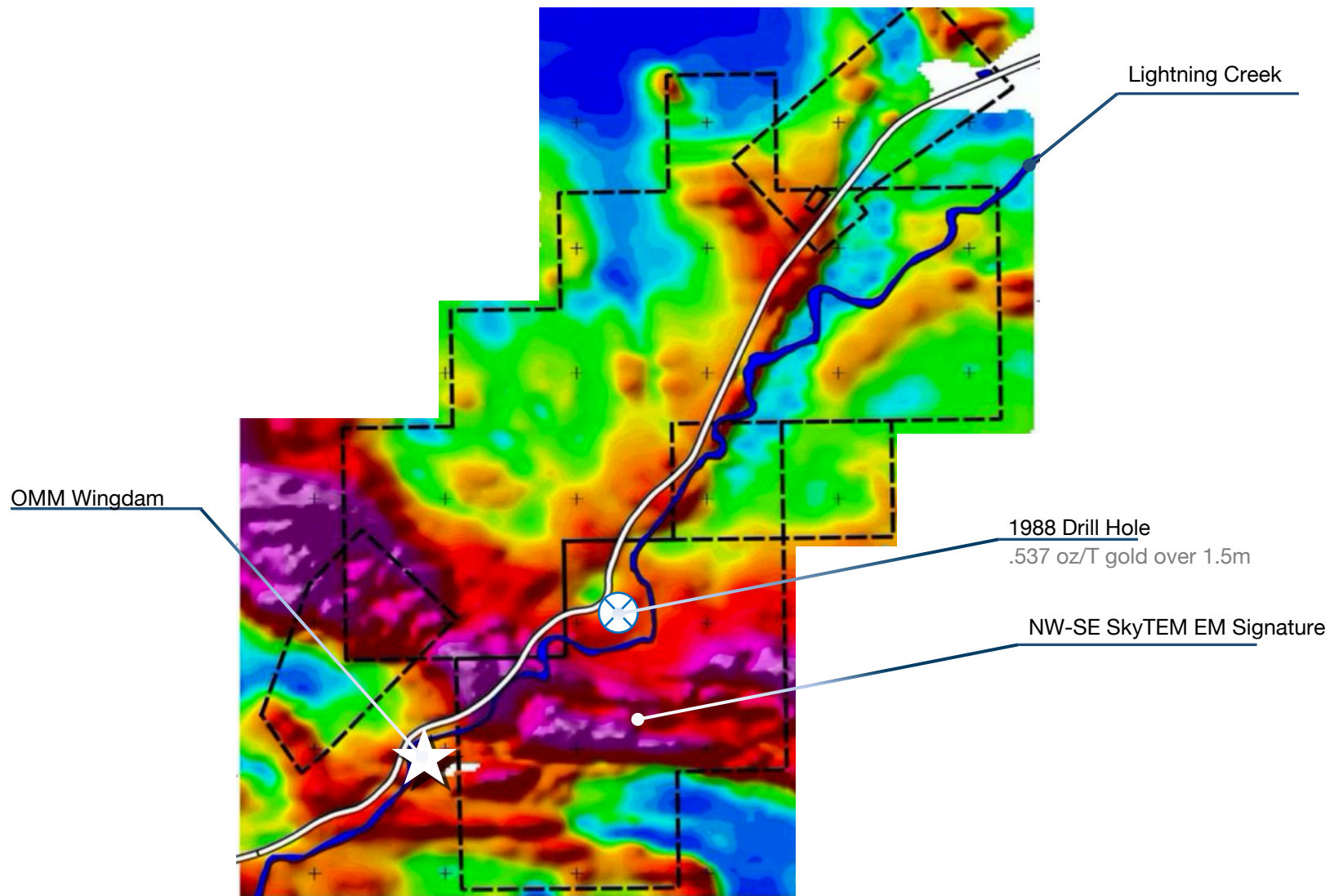


Mirror Image Geology





Where's the Source of the Lightning Creek Gold?





2019/20 Hard Rock Exploration Plans

2018/19

- ✓ Mag completed over Wingdam and Fraser Canyon hard rock and placer claims
- ✓ 8 hard rock drill targets identified – 4 at Wingdam, 4 at Fraser Canyon
- ✓ Additional potential underground paleochannels identified at Fraser Canyon property

2020

- Ground sampling and mapping over hard rock target areas
- Conduct detailed Mag/geophysics over identified target areas to identify individual drill targets
- Exploration drilling programs
- Hard rock targets at Wingdam and Fraser Canyon
- Drill targets at Fraser Canyon to confirm additional occurrences of paleochannels and potential placer mineralization



TSXV: OMM

Omineca Mining and Metals