

TSXV: OMM



# Placer Recovery and Lode Gold Exploration At Wingdam

December 2021



# Forward Looking Statements

**This presentation is for information purposes only and does not constitute an offer to sell or a solicitation to buy any securities**

This presentation includes certain “forward-looking statements” within the meaning of applicable securities legislation. These statements are based on management’s current expectations and are naturally subject to certain uncertainty and changes in circumstances. Actual results may vary materially from the expectations contained herein due to changes in economic, business, competitive and/or regulatory factors. Omineca Mining and Metals Ltd. (“Omineca” or the “Company”) is under no obligation to (and expressly disclaims any such obligation to) update or alter its forward-looking statements whether as a result of new information, future events or otherwise. The reader is cautioned not to place undue reliance on forward-looking statements.

A qualified person has not done sufficient work to classify the historical estimates contained herein as current mineral resources or mineral reserves, the Company is not treating the historical estimate as current mineral resources or mineral reserves and the historical estimate should not be relied upon.

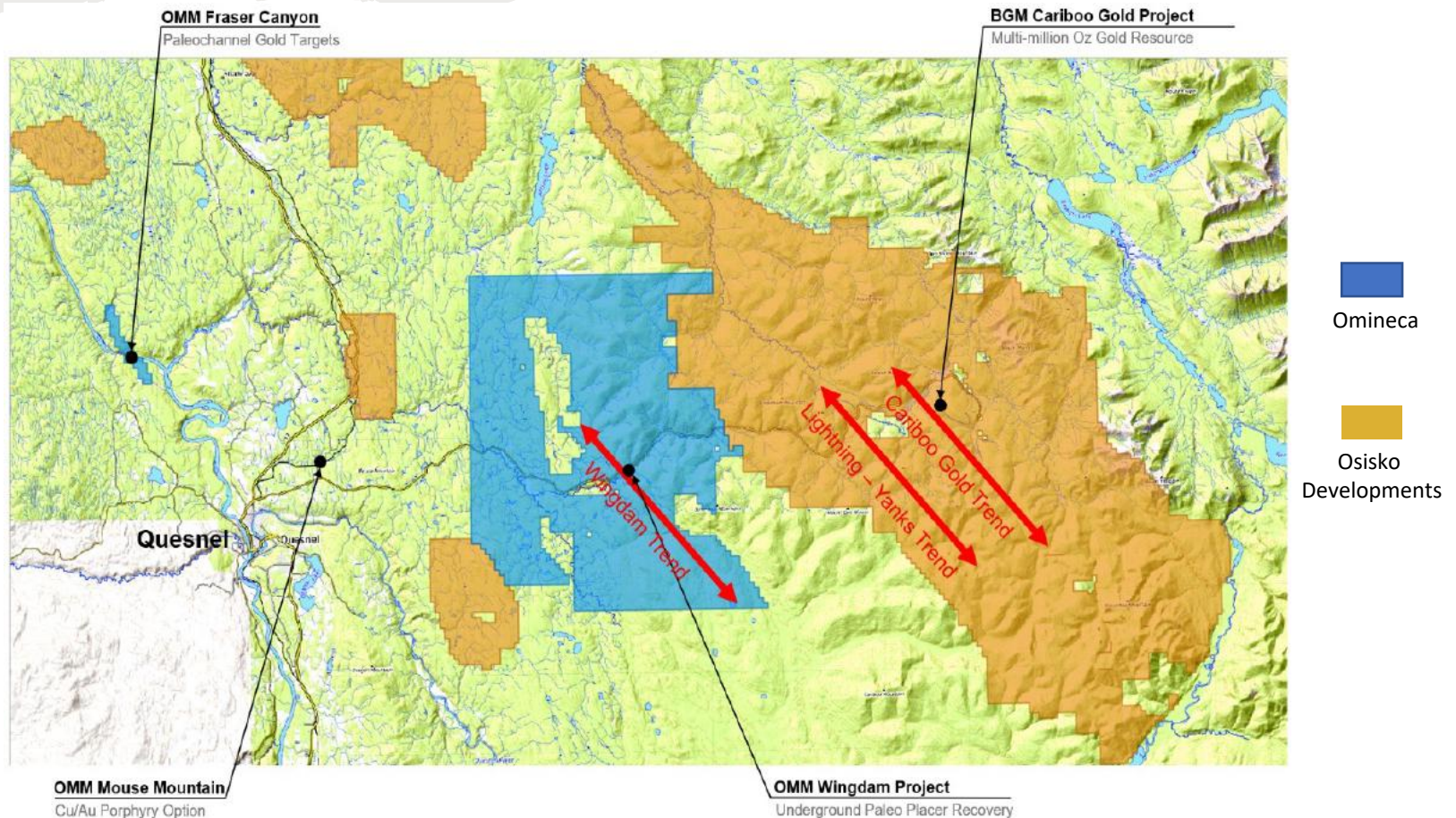


# Share and Capital Structure

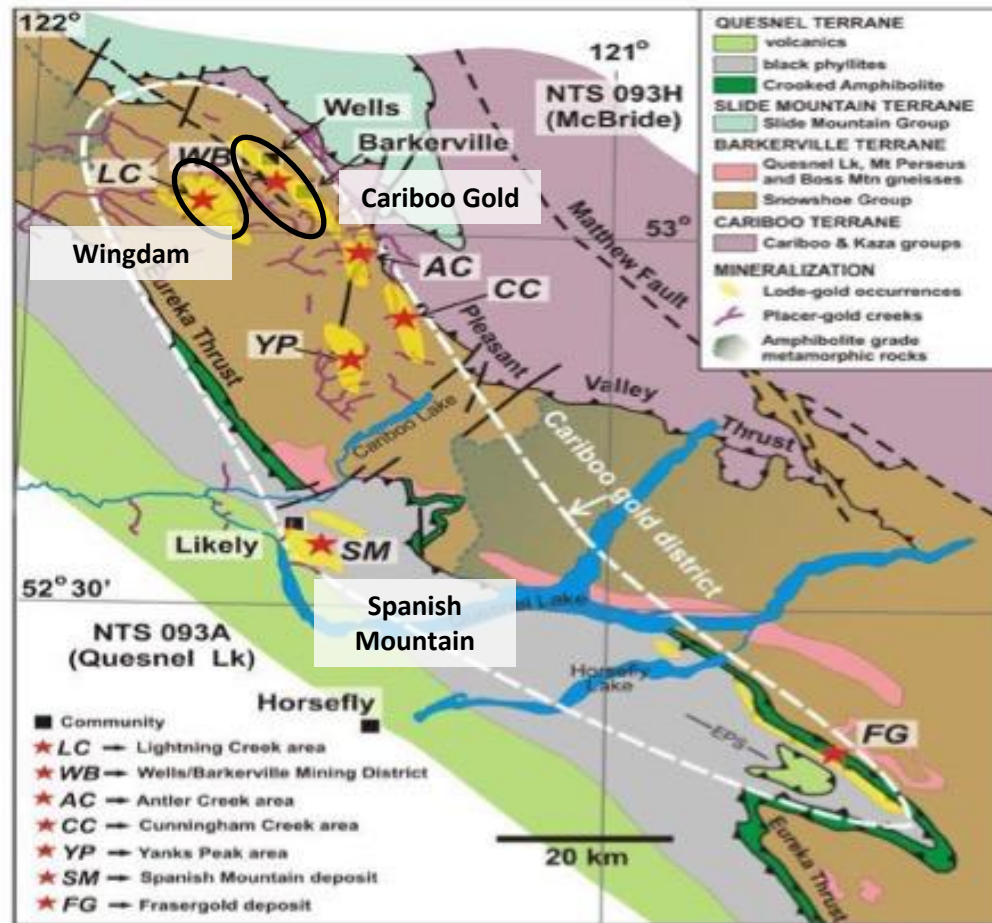
<b>Listing</b>	<b>TSXV: OMM</b>
<b>Shares I/O</b>	<b>121.9 million</b>
<b>Warrants</b>	<b>31.3 million</b>
<b>Options</b>	<b>10.4 million</b>
<b>Fully Diluted</b>	<b>163.6 million</b>
<b>Management and Insiders</b>	<b>~41.3%</b>



# Synopsis – Wingdam Gold Exploration & Placer Recovery

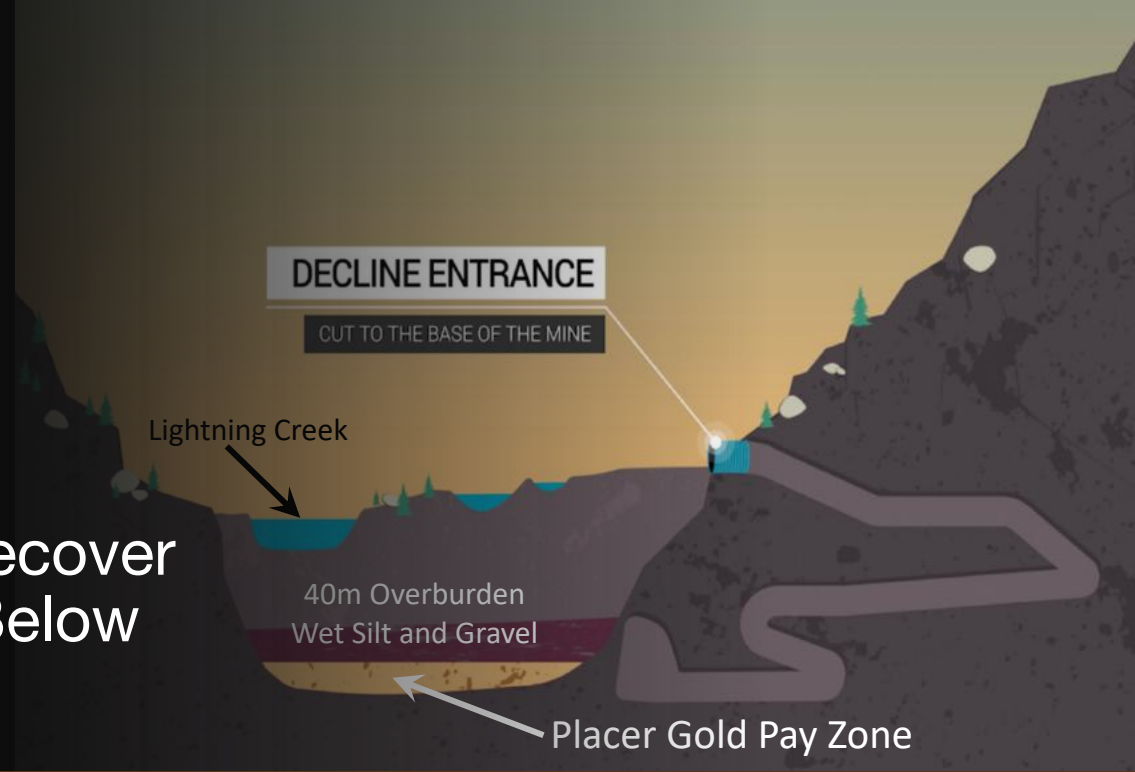


# Cariboo Mining District



## OUR PAST

Using Innovation to Recover  
Rich Placer Trapped Below  
Lightning Creek





# How We Did It - 2012



2.4 Km Channel Underneath  
Lightning Creek



Dewater Existing Decline



If Necessary, Freezing Any  
Unstable Ground Above  
Crosscut



Crosscut Material Processed by  
Water Wash Plant Underground



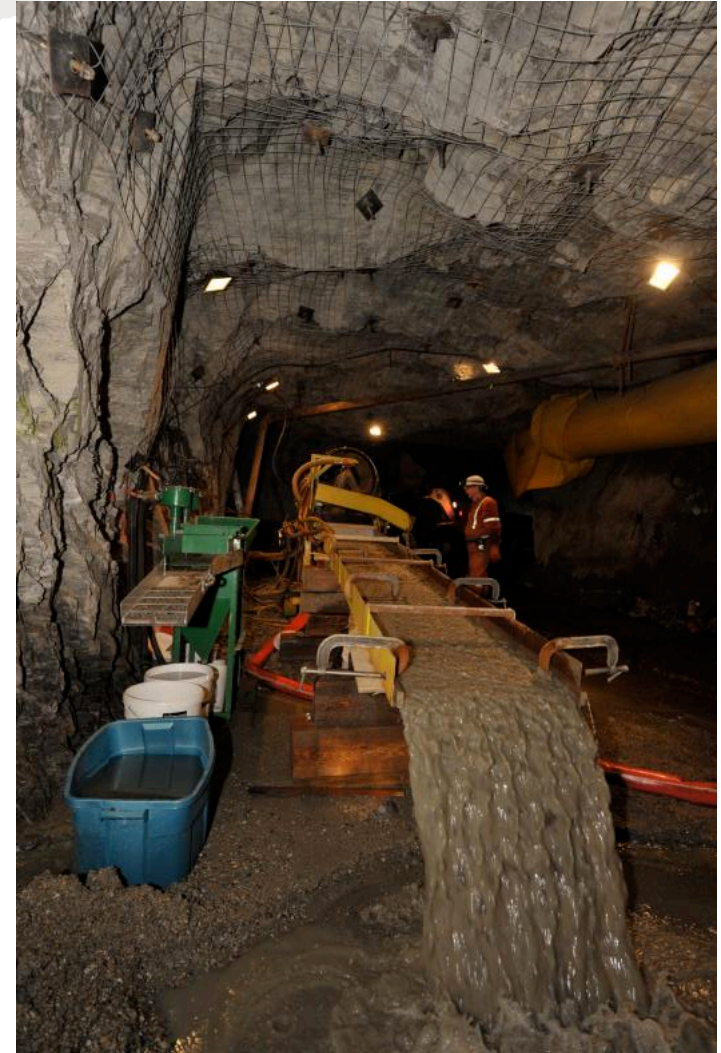
5.4 Kilos Placer Gold  
Recovered in 2012



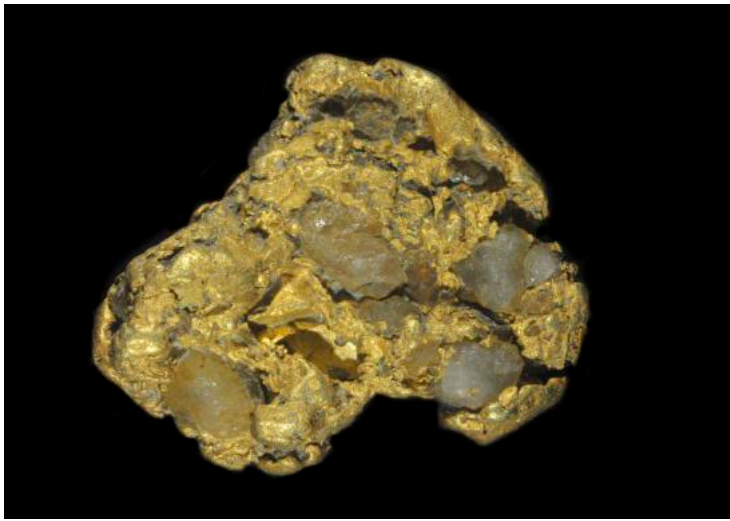
Innovative But Not New – 2012 Using Ground Freezing



# Underground Water Trommel & Wash Plant Recovery - 2012



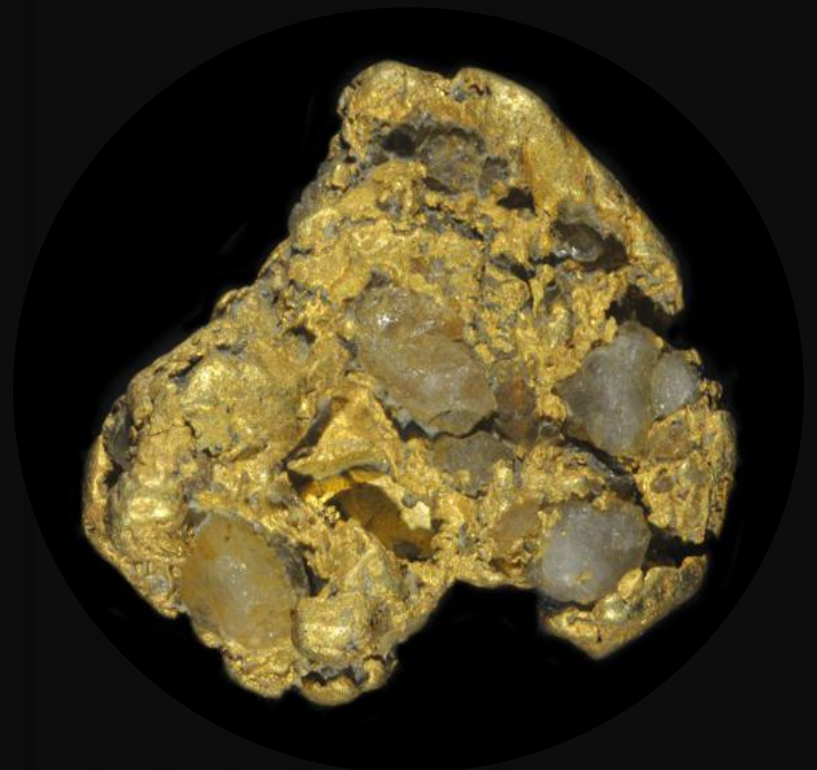




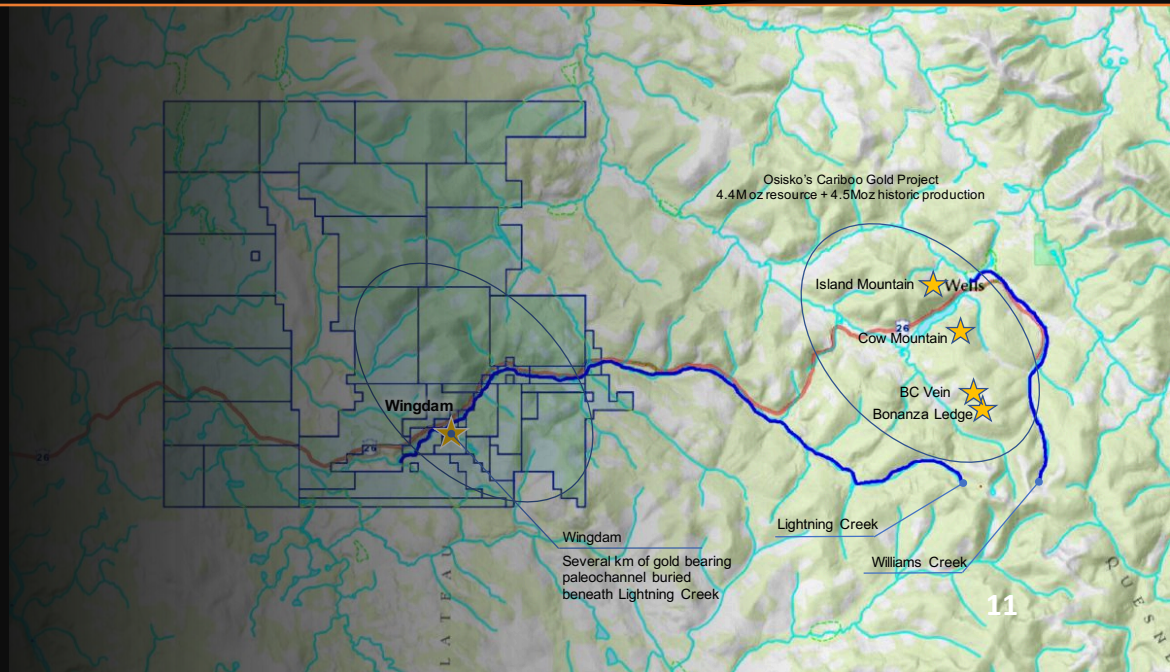
5.4kg (173.4 oz) of Placer Gold Recovered 2012



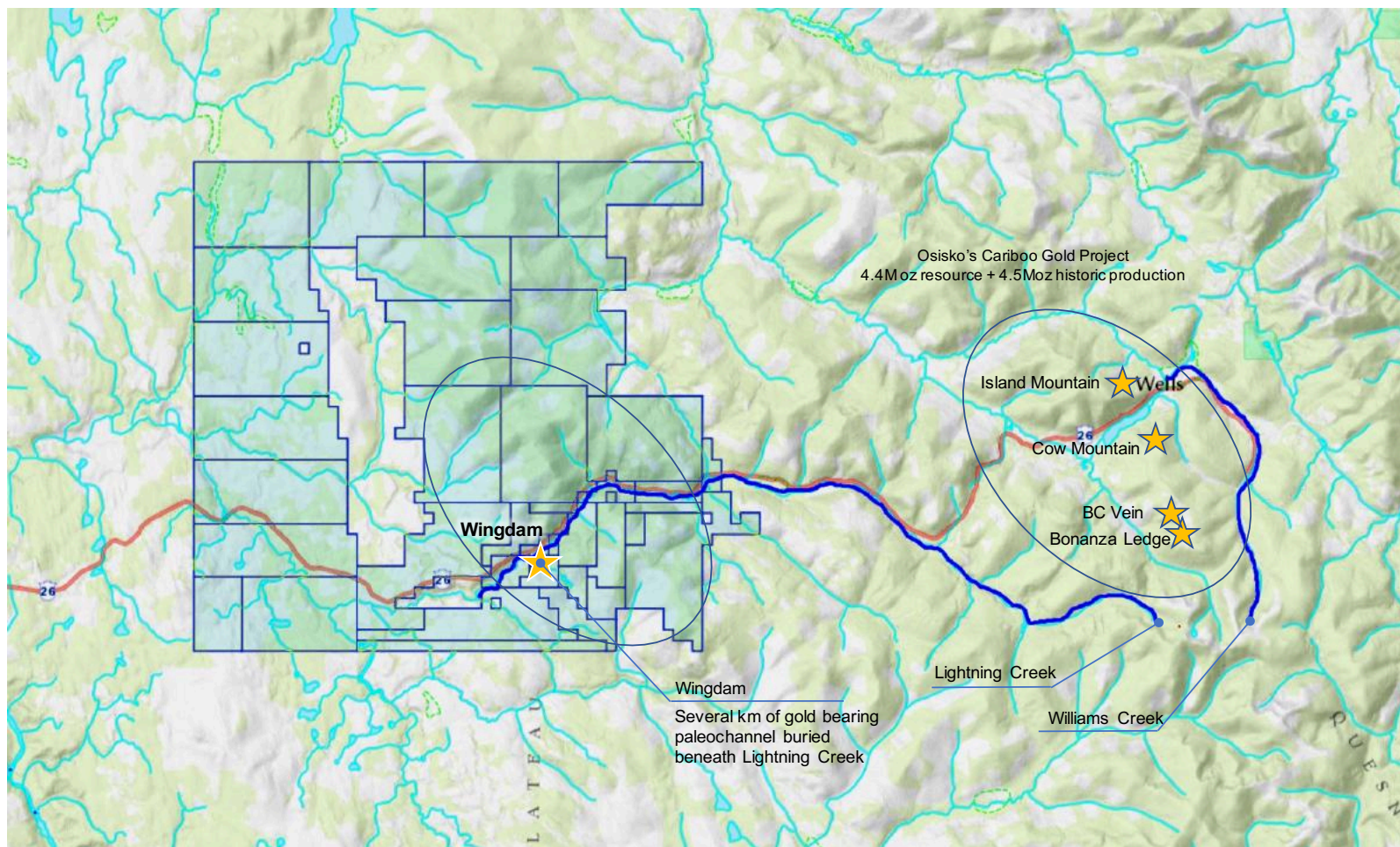
Where Did This Rich Placer  
Gold Beneath Lightning  
Creek Come From?



Is it Analogous to Barkerville  
and Williams Creek?







Wingdam – Lightning Creek

Barkerville – Williams Creek



## And Now Its a 2-Part Story

Resume the Recovery of the Placer  
Gold Trapped Underground Beneath  
Lightning Creek

And

Explore For the Source of That Rich  
Placer Gold





2021

---

We are underground





## 2021

- ✓ Dewatering
- ✓ Rehabilitation
- ✓ Engineered Grout Plug
- ✓ Surveying
- ✓ Water Management System
- ✓ Underground Drilling
- ✓ Engineered Grouting Plan
- ✓ Processing Facility Design/  
Procurement/Fabrication
- ✓ Ministry Data/Engineering Reporting  
– Ongoing
- ✓ Procured Antaquip 50 roadheader
- ✓ Procured grouting equipment
- ✓ First Grout Curtain - underway

### Next Steps

- First Crosscut
- Continue Drifting Downstream First  
300 meters
- Continue with Series of Crosscuts and  
Drifts







Dewatering – Settling Ponds  
August 2021



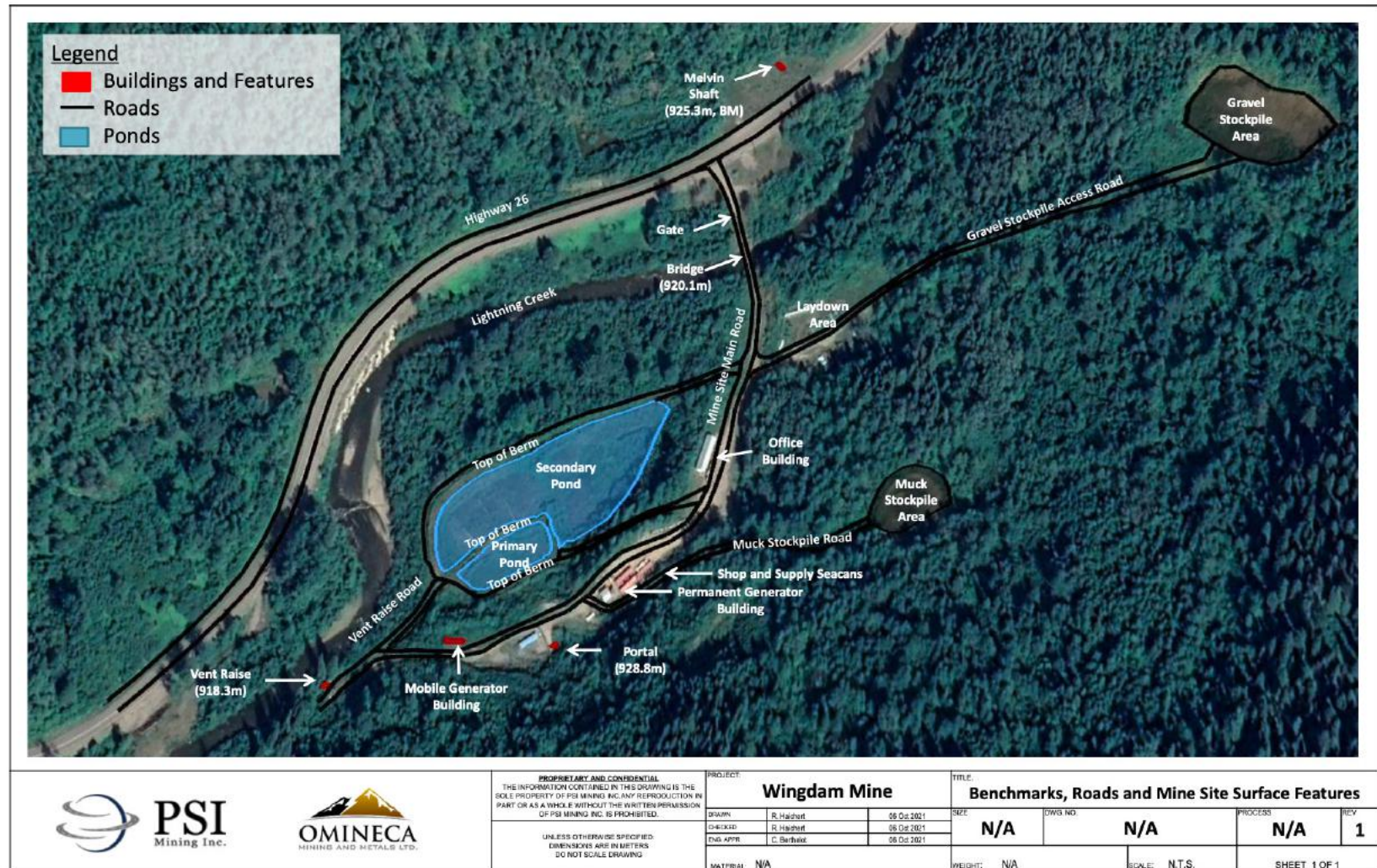
# Wingdam Camp September/October 2021



**Figure 10.2 Wingdam Mine Retention Ponds**



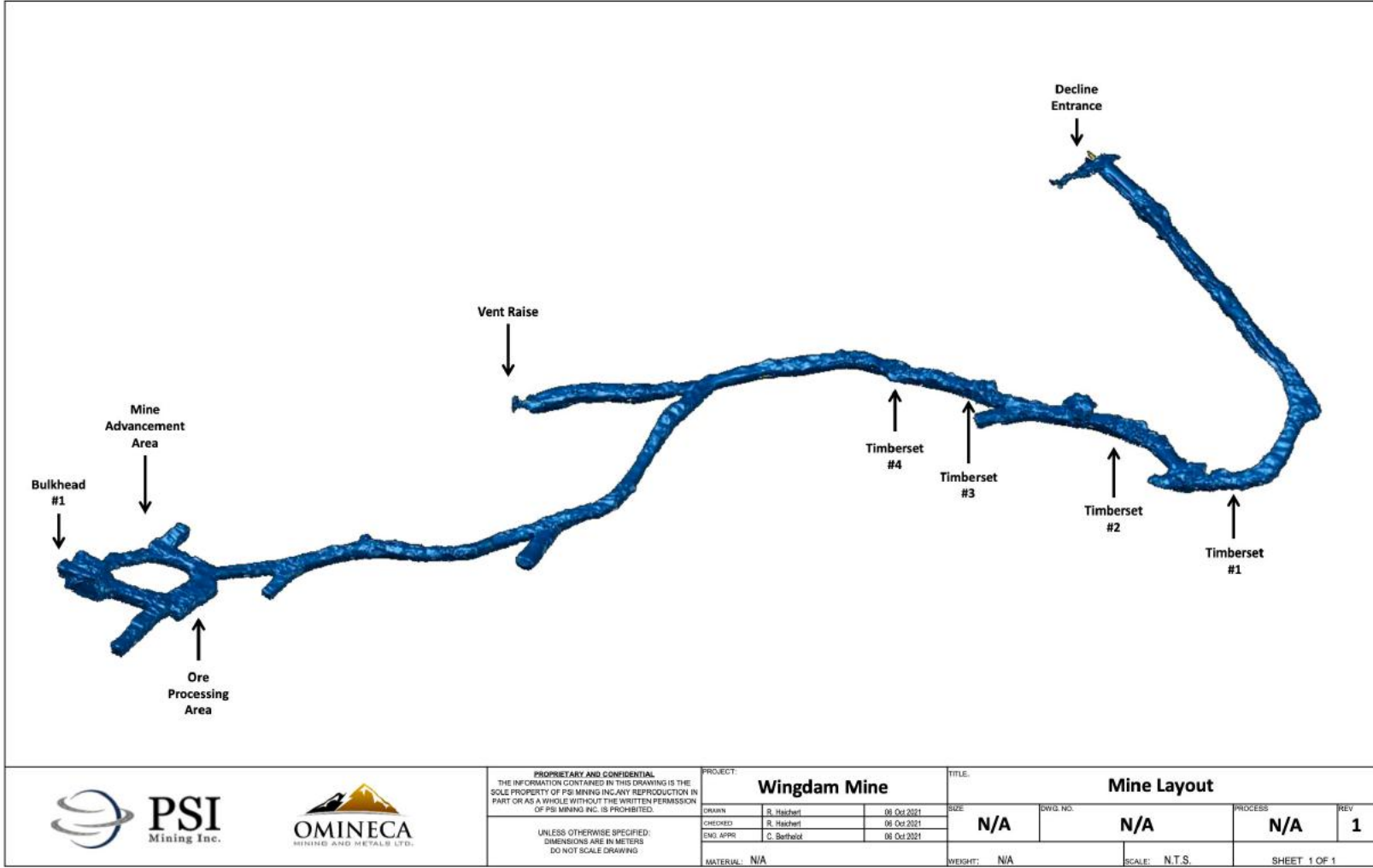
# Wingdam Camp September/October 2021





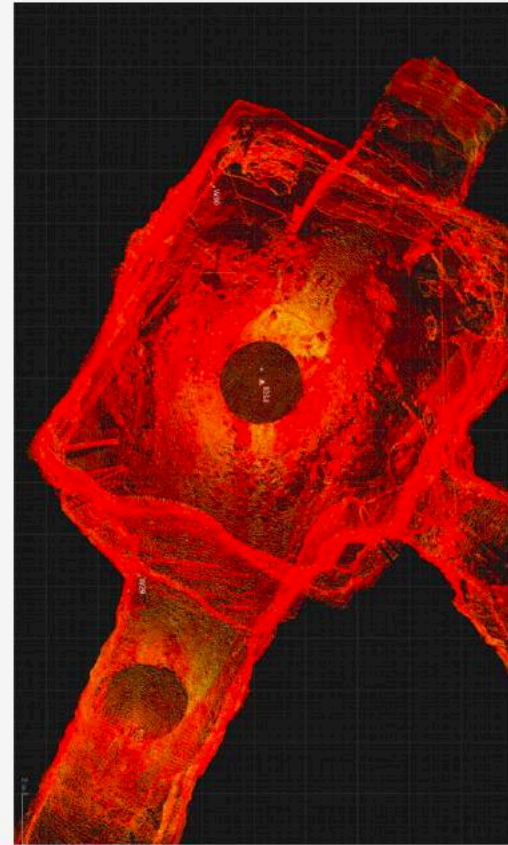
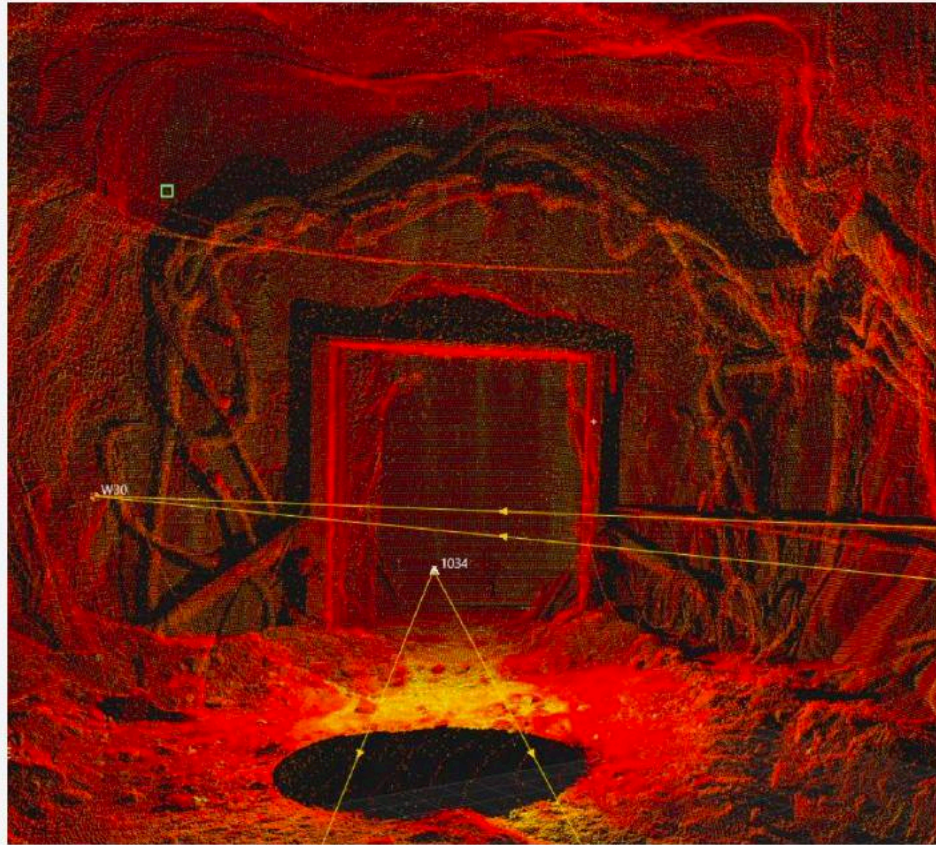
Bulkhead with Dewatering Pipe and Meter  
Aug 17<sup>th</sup> 2021





Underground Re-Surveyed  
3D Scanned October 2021





PROPRIETARY AND CONFIDENTIAL  
THE INFORMATION CONTAINED IN THIS DRAWING IS THE  
SOLE PROPERTY OF PSI MINING INC. ANY REPRODUCTION IN  
PART OR AS A WHOLE WITHOUT THE WRITTEN PERMISSION  
OF PSI MINING INC. IS PROHIBITED.

UNLESS OTHERWISE SPECIFIED:  
DIMENSIONS ARE IN METERS  
DO NOT SCALE DRAWING

PROJECT:

**Wingdam Mine**

DRAWN:

R. Hinchey

18 Oct 2021

CHECKED:

R. Hinchey

18 Oct 2021

ENG. APPR:

C. Borlind

18 Oct 2021

MATERIAL: N/A

TITLE:

**Bulkhead #1**

SIZE:

N/A

DWG. NO.:

N/A

PROCESS:

N/A

REV:

1

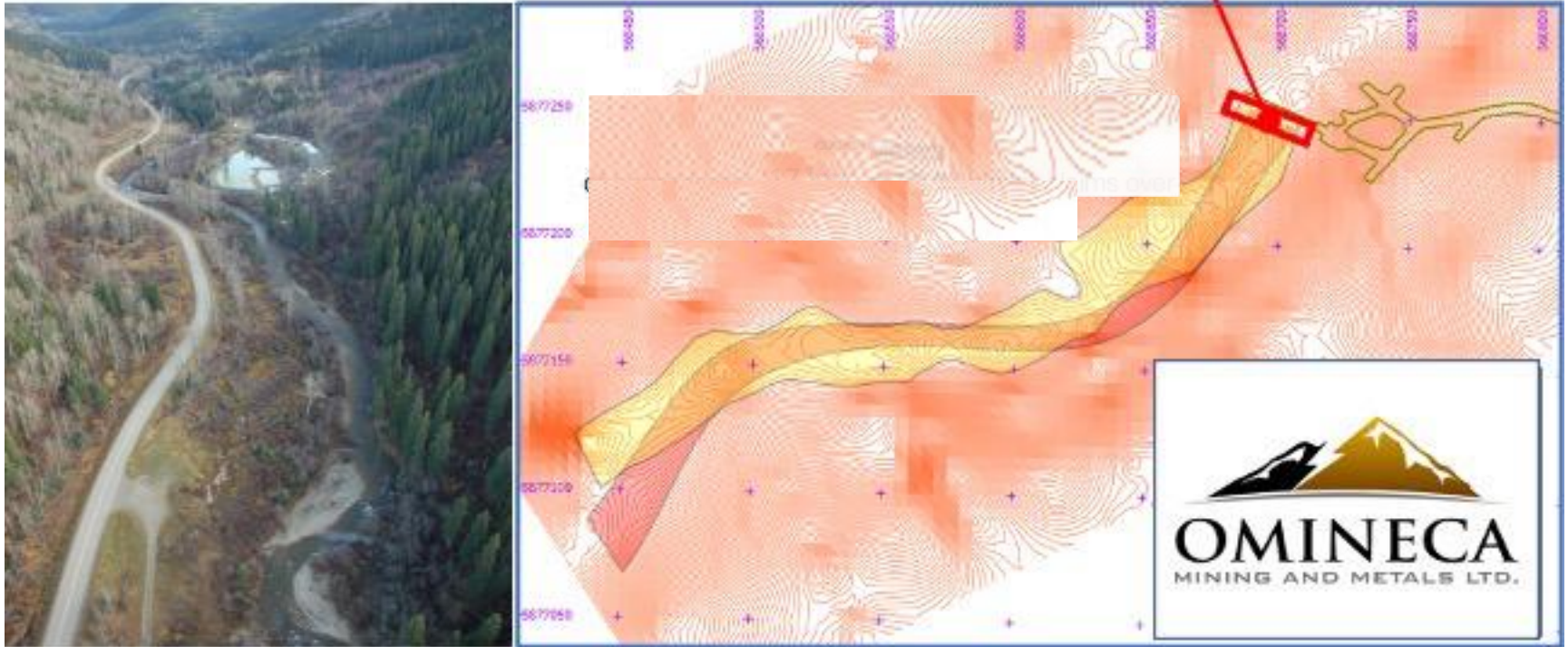
WEIGHT: N/A

SCALE: N.T.S.

SHEET 1 OF 1

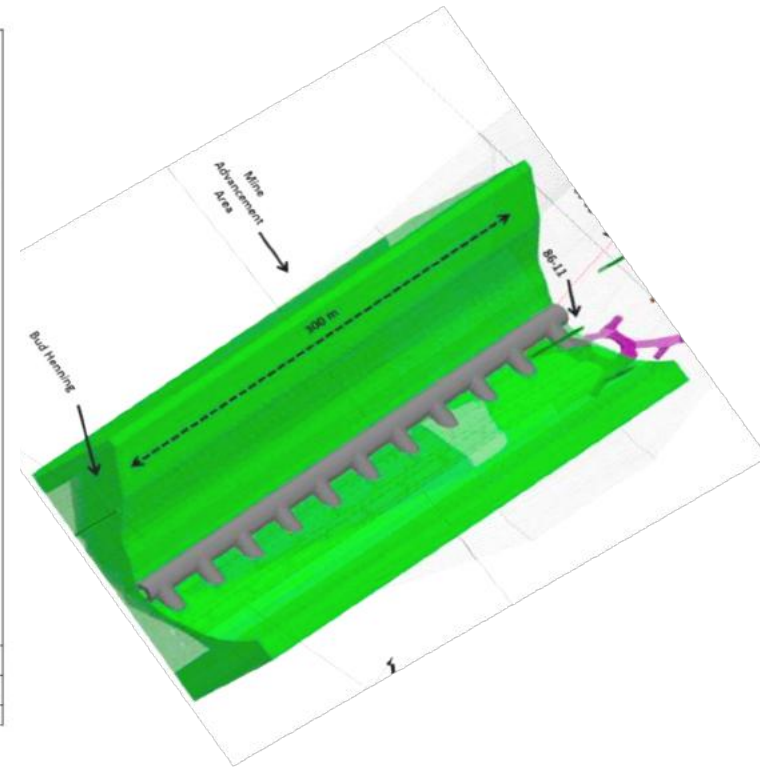
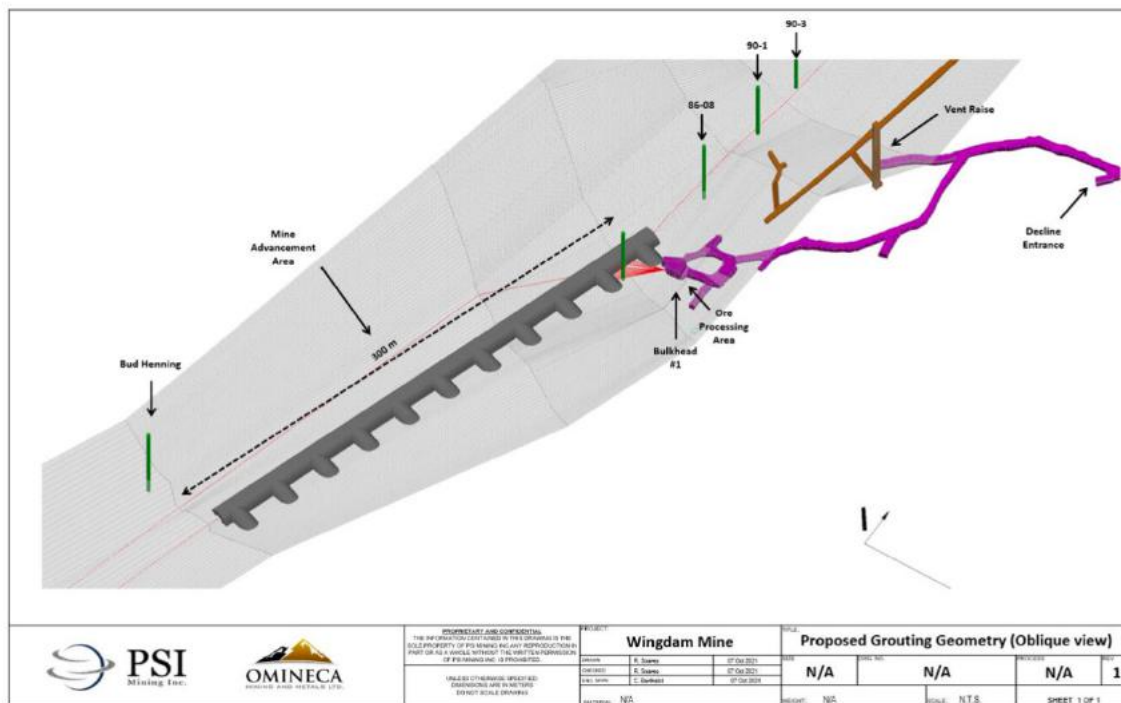
Bulkhead 3D Scan October 2021

Test sample recovered 5.4 kilos (173.5 ounces)  
from 2.4m wide 23.4m long crosscut drift (2012)



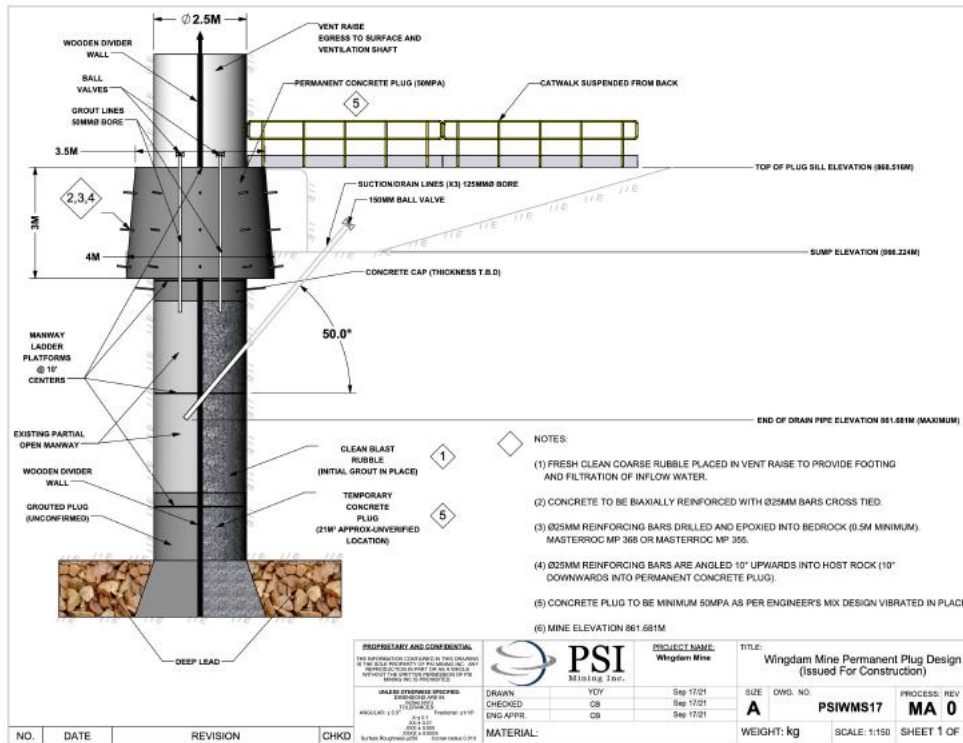
First 300 Meters of Now ~17km of Potential  
Paleochannel  
(for scale, 2.4m wide X 125 = 300m)





**Figure 6.4 Proposed Grout Geometry (Oblique View)**

Grout Geometry – First 300 Meters Downstream (West)



## Permanent Grout Plug & Vent Raise/Secondary Egress

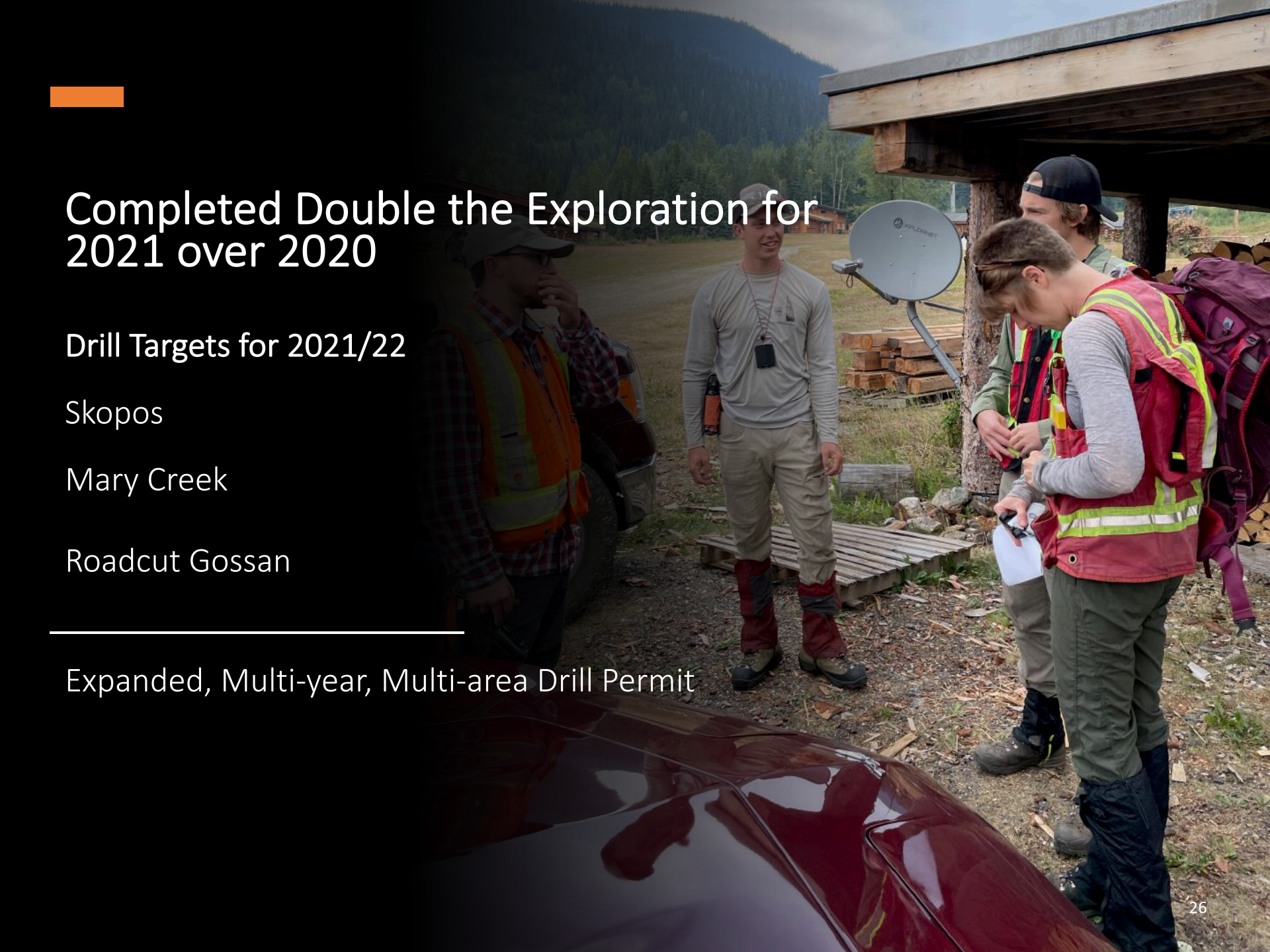


# Drilling Underground

- Pilot Holes
- Grout Holes
- Water Pressure Monitoring Holes
- Insitu Materials Testing







# Completed Double the Exploration for 2021 over 2020

Drill Targets for 2021/22

Skopos

Mary Creek

Roadcut Gossan

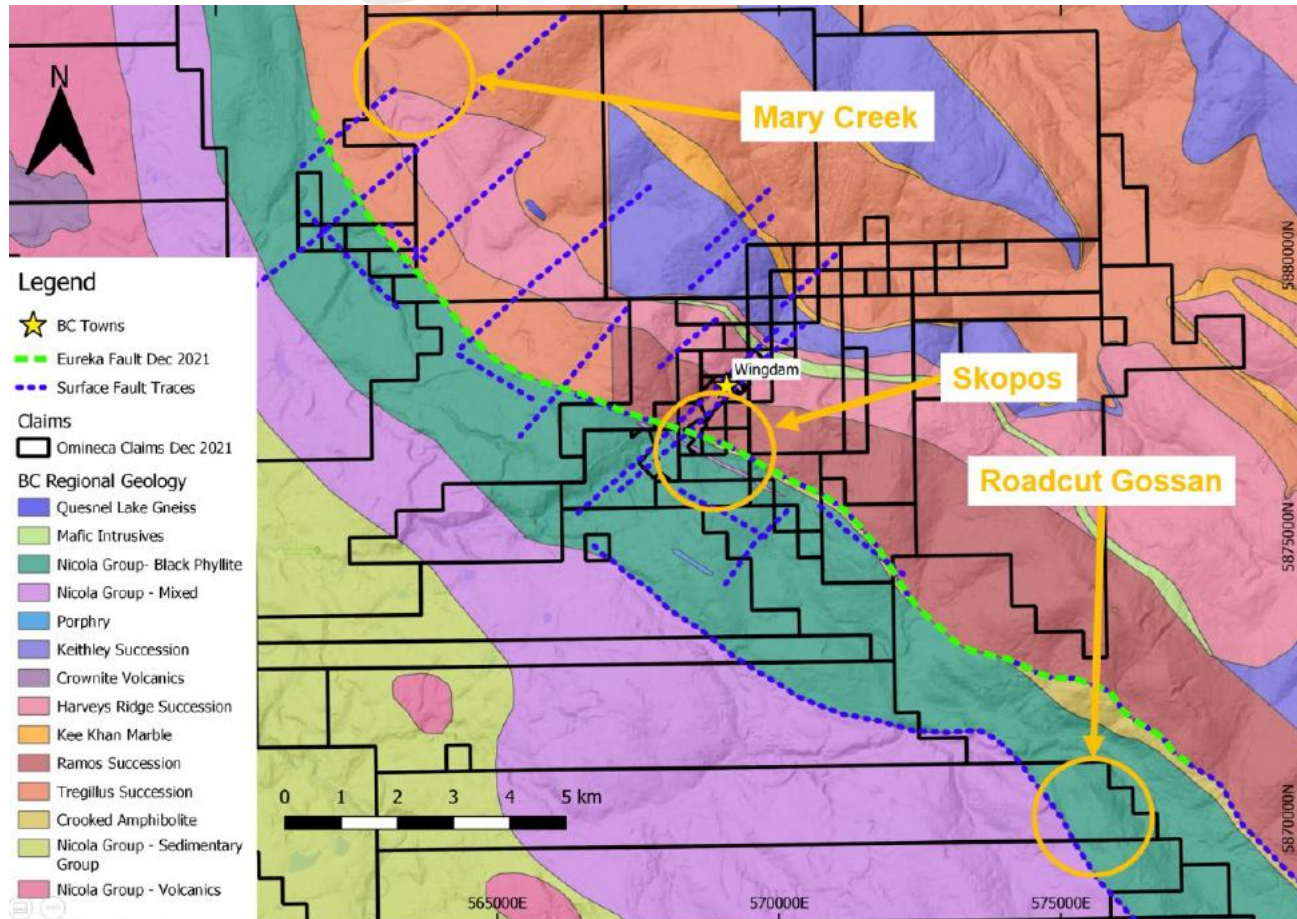
---

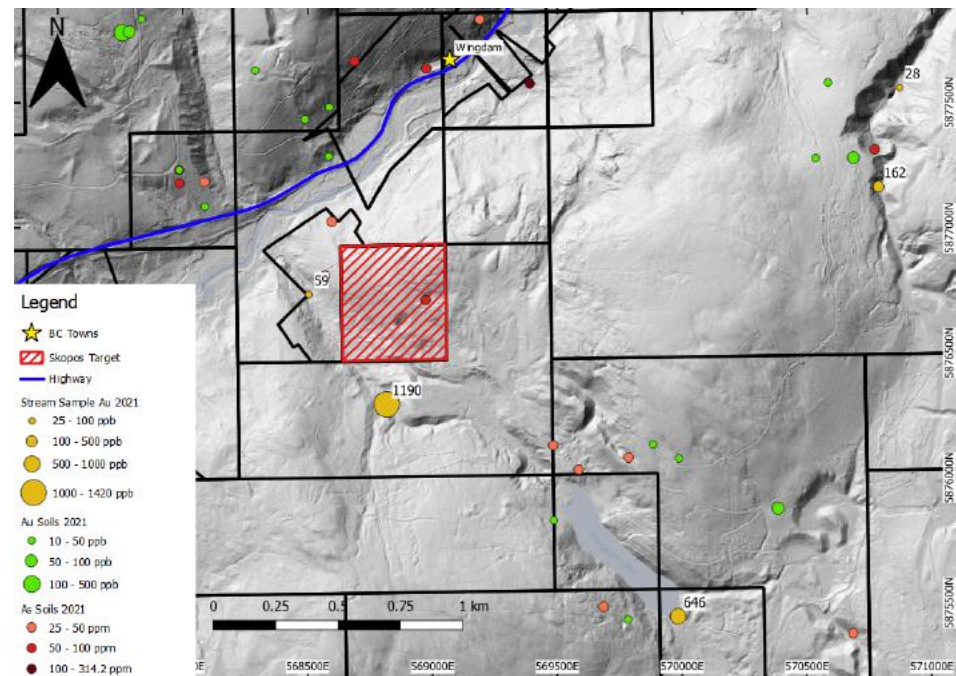
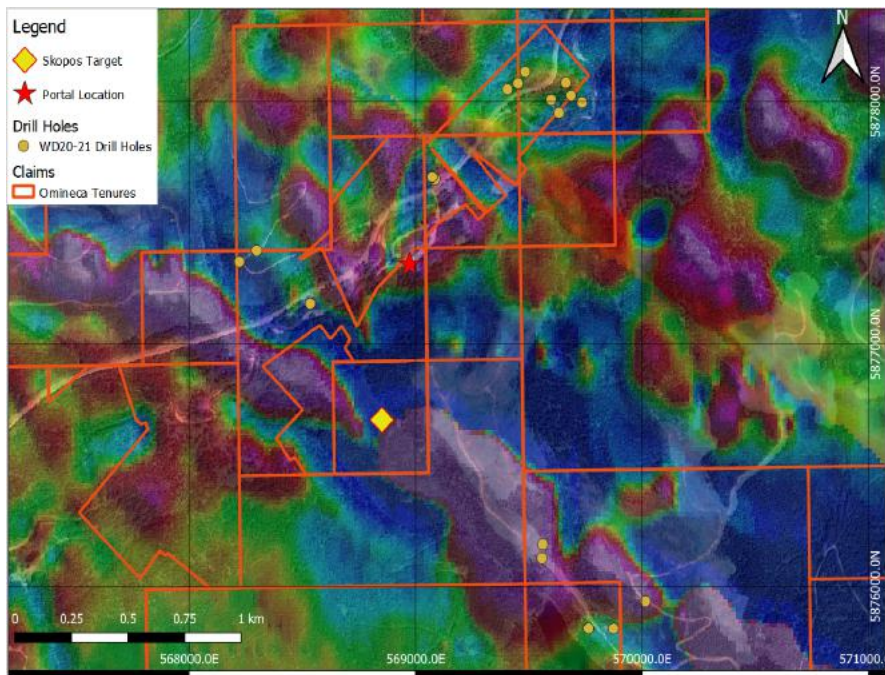
Expanded, Multi-year, Multi-area Drill Permit



# 2021/22 Drill and Exploration Targets

## Skopos, Mary Creek, Roadcut Gossan





The Skopos target is at an intersection of structural activity identified in the most recent geophysics, coincident with elevated gold values in stream sediment samples and arsenic along with gold in soil sampling grid surveys across the area.

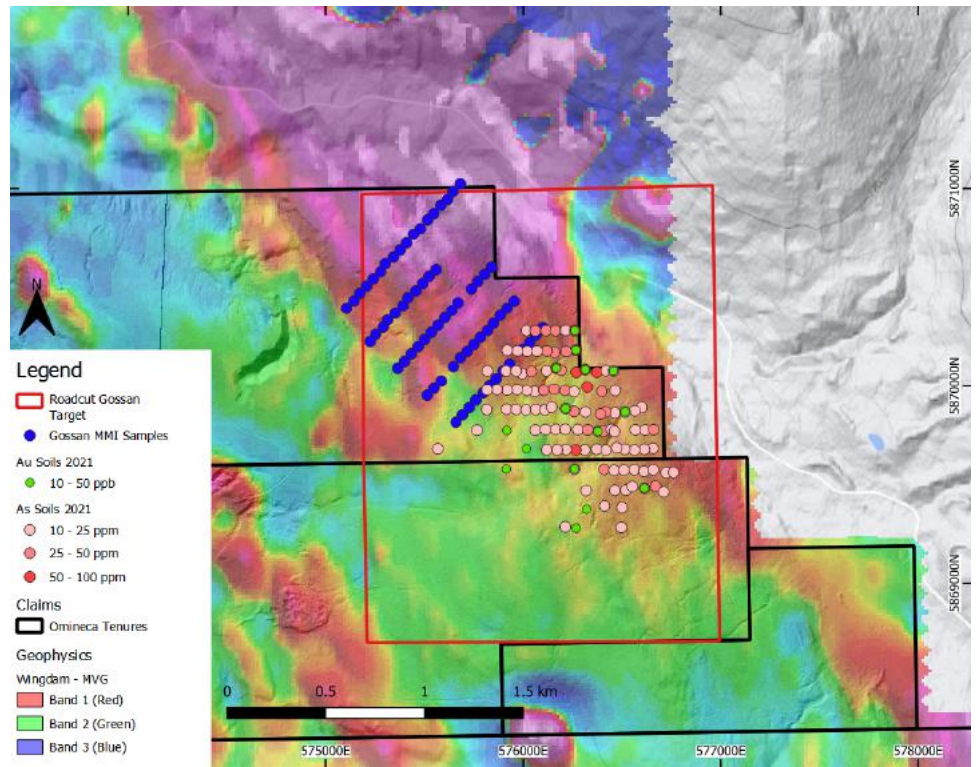
Exploration programs at Skopos will be targeting the identified structural fault zones and nose folds and will include IP (Induced Polarization), stratigraphic drill holes and a diamond drill program.

The Skopos program is slated to begin in the 2021/22 winter season.

## Skopos Target







The Roadcut Gossan priority target is located approximately 11 kilometers south of Wingdam. Although on trend with Wingdam and other targets, the program geologists are seeing the potential for sediment hosted gold targets in this area analogous to the Spanish Mountain gold deposit located further on trend to the southeast.

## Roadcut Gossan



TSXV: OMM

Omineca Mining and Metals

